

SPECIAL EDITION
HONG KONG

ONE STORY

\$5 CAD
¥500

BY MERCI MEDIA CORPORATION

ISSN 2817-1276

May 02, 2024

ART | BUSINESS | DESIGN | HOSPITALITY | LEISURE | LIVING | TRAVEL | WELL-BEING | REAL ESTATE

www.merci-magazine.com

TRANSFORMING DREAMS INTO TANGIBLE REALITIES

Step into the world of exquisite design with Regina Kwok, an interior designer par excellence from Artwill Interior Design House. Her creations are luxurious, simple, functional, and timeless, transforming clients' dreams into tangible assets.

MATERIAL MAESTRO



Regina Kwok's design expertise shines through as she combines the warmth of wood, the opulence of marble, and the natural appeal of stones. In a symphony of textures and elegance, her mastery transforms spaces into luxurious and harmonious environments.

THE FUNCTION OF PERCEPTION



Regina understands that how a space is perceived greatly influences the overall experience and impact it has on individuals. To create visually pleasing spaces, it is essential to understand proportion and scale. To ensure that every element within a room relates harmoniously, Regina pays close attention to the size, volume, and overall proportion of the room.

LUXURY SIMPLICITY AND HARMONY



The essence of Regina's design philosophy is harmony - achieving a seamless balance between different elements - be they colors, textures, forms, or functions. The goal is to create a cohesive and unified environment where every component harmonizes with the next.

INTERVIEW



Regina finds inspiration in travel. She enjoys exploring different countries when she has spare time to learn about new design perspectives and materials, enriching her creative vision and global understanding of aesthetics.

LIVING AS AN ART



Using vibrant hues to create cohesive and visually striking living spaces that evoke emotions and reflect individual style, Regina is known for her bold color philosophy.



ROYAL PENINSULAR

HONG KONG

Regina Kwok's story stands out as an inspiration when it comes to understanding the driving forces behind interior designers' career choices. At the age of ten, her family moved residences, which was the beginning of her journey. In the process of moving an apartment from one location to another, her father asked a friend to design and renovate the new apartment, and that's when she discovered that interior design is a career.

Her passion for interior design was ignited in these formative moments. She developed a profound passion for crafting spaces that exemplify elegance and functionality through meticulously selecting colors, materials, and harmonizing elements. This early exposure to interior design ignited a lifelong passion for design. Over the years, Regina's passion for interior design intensified. She spent countless hours researching and studying different design styles. She studied the principles of space planning and design, and immersed herself in the world of decor and furnishings. Her dedication to her craft grew, and she became known for her ability to create stunning and harmonious spaces that truly capture the essence of her clients' dreams.

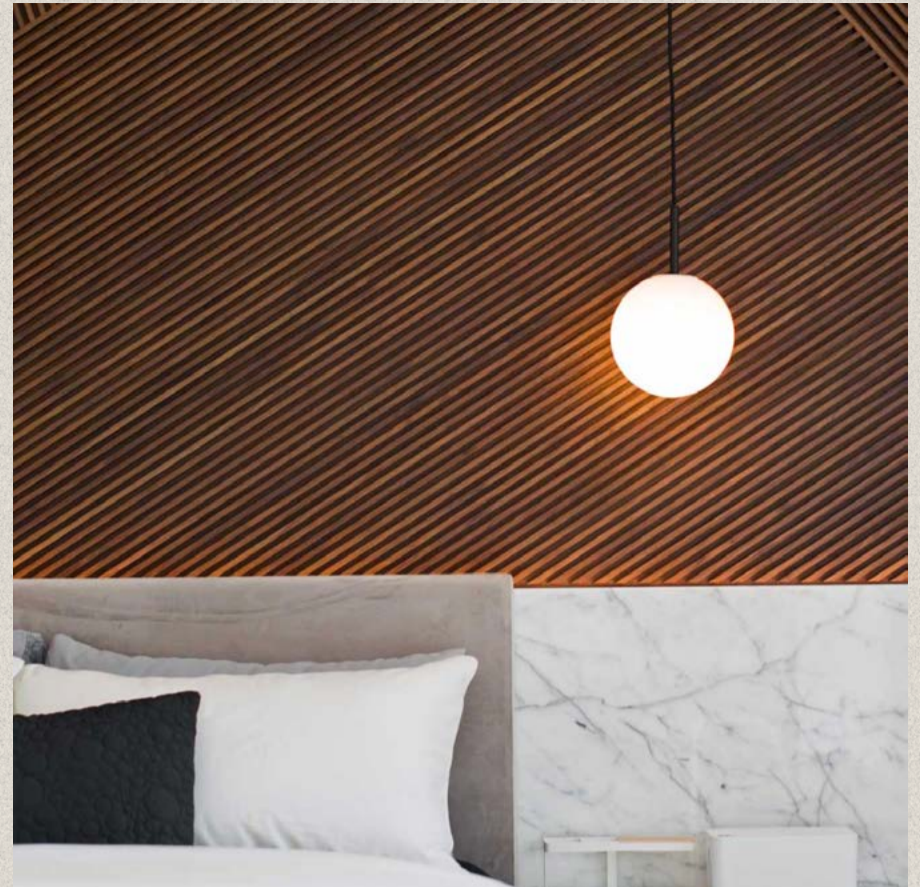
As a women entrepreneur and seasoned designer, Regina Kwok brings over two decades of professional insight and adaptability to the field of interior design. Her portfolio ranges from residential projects that capture the essence of home to innovative commercial spaces that redefine functionality and aesthetics. As a result of her visionary approach, she is now a multi-award winning designer.

“ I am driven to help others achieve their dreams of a dream home, which is also a dream of mine as an interior designer. ”





BRAEMAR HILL



The 14th greenwall, which serves as an artificial skylight, further enhances the ambiance. You can adjust the settings to mimic natural sunlight as you make your way up the stairs, creating an immersive experience. A unique feature that transforms the duplex into a comfort and wonderland adds depth and warmth to the space.

Adding warmth, texture, and harmony to Regina's designs, wood complements marble's richness.

**SIGNATURE STYLE:
MELDING LUXURY AND
SIMPLICITY WITH MARBLE AND WOOD**



BRAEMAR HILL



Shatin Mid-Levels



After starting her career in commercial office design, club house design in her early twenties, Regina soon realized her true passion was creating dream homes for her clients. By combining luxury and functionality in thoughtful designs, she draws inspiration from her clients' unique needs and aspirations. In the world of interior design, Regina stands out due to her dedication to understanding and transforming clients' visions."

As a mom of two children and owner of a thriving interior design company with over 10 dedicated colleagues, Regina demonstrates her multifaceted expertise and commitment to excellence. In addition to her creative talents, Regina is dedicated to continuous learning and growth.

In addition to designing stunning spaces, Regina's role as a leader includes fostering of innovation, teamwork, and client-centered service. In guiding 's success and growth, she has leveraged her team's strengths, cultivated creativity, and fostered a harmonious work environment. Dedicated to exceeding client expectations. To propel her colleagues towards professional and personal growth, she nurtures talent, empowers them, and provides ongoing mentoring.

Her interior design style blends the luxurious allure of wood and marblestone to create luxurious and sophisticated spaces. Infusing each project with a sense of refined elegance and quality craftsmanship, her meticulous attention to detail and expert use of materials elevate every aspect of luxury living. Wood and marblestone become integral components in creating bespoke living spaces that reflect the individuality and aspirations of Regina's clients when combined with her impeccable attention to detail, harmonious color palettes, and innovative spatial layouts.

With its timeless elegance and natural allure, marble is a cornerstone of Regina's design palette. Incorporating marble elements into spaces, from countertops to flooring to accents and statement pieces, she elevates the overall ambiance with a touch of opulence.

Adding warmth, texture, and harmony to Regina's designs, wood complements marble's richness. She brings a sense of coziness and timeless sophistication to every space by embracing the natural beauty and versatility of wood. Regina's expertise lies in finding the perfect balance between luxury and simplicity with wood elements, whether it's oak's warmth, walnut's richness, or maple's versatility.

ONE STORY, ONE INTERVIEW

Transcending Aesthetics: Pushing Boundaries and Beyond

In addition to your role as a mother and creative director, do you have any personal hobbies or interests?

Travel is one of my favorite things to do, because it allows me to explore different cultures and designs around the world.

When you travel to explore design from different countries, what inspires you most, and how does this influence your own unique design style?

Traveling and staying in different types of accommodations, such as hotels and Airbnbs, is one of my favorite pastimes. This experience will allow me to discover the design of other cultures, and to apply the ideas to the design project.

Traveling inspires my choice of colors and materials in hotels and other retailers. It is particularly enriching to explore tactile experiences with these materials. Additionally, I am interested in how these materials might be incorporated into Hong Kong's designs. Considering our region's moist and humid climate, some materials may not be suitable. Personally, I find this aspect to be a compelling case study

As a female entrepreneur in design, can you discuss the transition from commercial to residential projects? How has your dream of designing your own home shaped your client work?"

"The management and expansion of our boutique design agency have been challenges for me as a female entrepreneur. The first five years of our company were filled with a wide range of projects, ranging from commercial spaces to office designs to clubhouses and facades. However, as our agency grew, we noticed a shift in project scales, with a greater focus on residential projects.

In my first ten-year career, residential projects have become increasingly captivating. Throughout my life, I have dreamed of designing my own house. Taking this

course has given me valuable insight into how I can help others create their dream homes. This is how I see one of the most valuable and impactful aspects of my career is being able to help people build their dream houses.

In your first decade of business, how have client preferences and attitudes towards office design changed?

As a designer, I've found clients are more conservative and budget-conscious in the first 10 years of my business. Particularly in commercial and office design. Today, clients realize that a good office design will be able to help elevate their businesses.

Today, clients are increasingly open to exploring diverse design approaches and may consult multiple designers for their insights. They recognize the significant positive impact that effective design can have on their business, especially in sectors like retail and restaurants.

How would you like to expand your design expertise and practice in a particular type of commercial or retail space?"

To many women, delicated and sophisticated have meaning. Retail design work such as cosmetics, skincare, boutique jewelry shops, and coffee shops would be of interest to me. There is a great deal of potential for creativity in this area, as creativity can be pushed much further.

How do you integrate 'smart home' technology into your design projects?

We have been recognized with several awards in the 'smart home' technology category. We integrate a variety of lighting and sensor technologies to achieve



this innovative approach, ensuring that functionality and aesthetics strike the right balance in our designs.

How do you balance life and work as a female entrepreneur, especially when providing support and protection for your family and employees?

I was fortunate to have mentors and a support system when I was young to help me overcome life's challenges. As a mother and executive, I have a responsibility to provide shelter and support for my family and employees. Women entrepreneurs face unique challenges in balancing work and personal life, but I have found strategies to help. Structured schedules with designated time for work and personal life can help maintain balance and prioritize self-care. It is also necessary to set boundaries at work and seek support from mentors and colleagues in order to navigate these challenges effectively.

THE FUNCTION OF PERCEPTION

Designing a closet involves a multifaceted approach beyond aesthetics, delving into functionality and efficiency. Factors such as space utilization, lighting, organization, accessibility, colour, material, and customization play pivotal roles in crafting a closet that looks good and serves its purpose seamlessly.

Regina and her team emphasize colour and material choices, recognizing their ability to set a mood, create focal points, and enhance visual appeal. These elements, coupled with thoughtful lighting, ambiance considerations, and meticulous organization, significantly influence the overall functionality of the space.

Regina's team, always at the forefront of design trends, integrates smart home gadgets into their interior designs, adding a modern touch to their creations. They

employ various strategies to create focal points within closet designs, including the use of bold paint colours, unique light fixtures, statement furniture pieces like mirrored chests of drawers, and decorative wallpapers or tapestries. Incorporating standout elements such as stunning chandeliers, art pieces, distinctive flooring, decorative glass doors, custom-built closet systems, and eye-catching hardware further enhances the visual impact and functionality of the closet space.

Furthermore, the meticulous inclusion of decorative trims or moulding details adds an extra layer of interest, creating a well-balanced and visually engaging closet design.



THE ART OF LUXURY LIVING: EMBRACING BOLD COLORS WITH SIMPLICITY

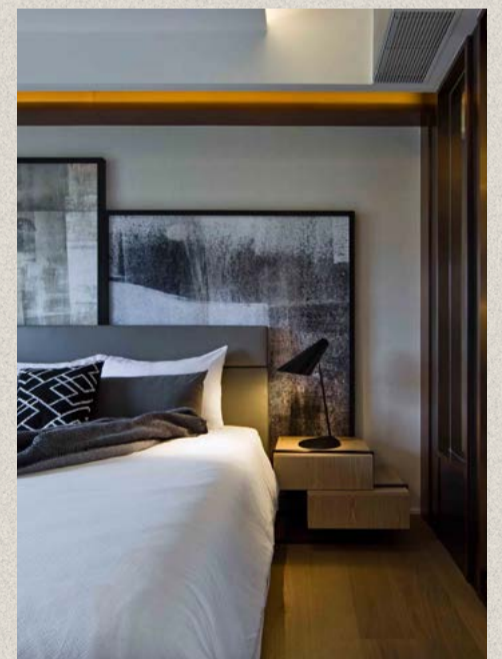
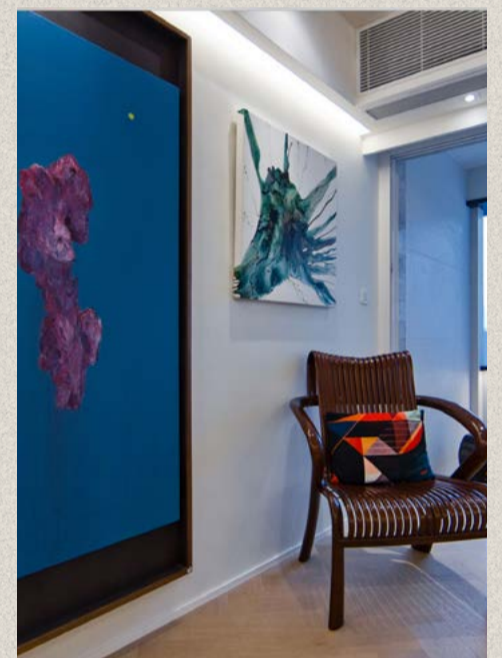


BRAEMAR HILL

Embracing Bold Colors with Simplicity Bold colours in closet designs can create a sense of energy, excitement, and playfulness. It can also make a space seem larger or more inviting. Use them sparingly and in the proper proportions to avoid becoming overwhelming or distracting. Using bold colours can create a focal point, define specific areas or zones within the closet, or add visual interest. Regina and her team enjoy designing for owners passionate about culture and art and incorporating their passion into art and furniture. Sometimes, the design must reflect and radiate a sense of femininity and tranquillity. Regina and her team can suggest combining bold colours and tranquil tones in a specific corner design for a balanced look. This can be achieved by incorporating vibrant hues on an accent wall or as statement pieces. In contrast, most of the space remains soothing with neutral or calming colours. This creates a dynamic and energetic atmosphere while providing a peaceful and tranquil ambiance.

Reflection of Living

For each project, preparation is necessary. Regina and her team can offer concept development, author supervision, and delivery management services as needed. Regina's mission is to transform dreams into tangible realities and empower women in the design industry. Don't be afraid to be brave and bright! Incorporating bold colours into a design is critical because it adds visual interest and excitement to a space. It can create a focal point, define specific areas or zones within a design, and make a space appear larger or more inviting. Besides reflecting and radiating a particular mood or theme, bold colours can also be used to express and create a unique and memorable space, just as we would make our portfolios.



Photos courtesy of ARTWILL INTERIOR DESIGN HOUSE



ARTWILL INTERIOR DESIGN HOUSE

19/F., 103 Hennessy Road, Wan Chai, Hong Kong

Phone: (852) 2877 8618

Email: info@artwill.com.hk

Facebook: facebook.com/ArtwillInteriorDesign

https://artwill.com.hk



#ISSUE 12
#ISSN 2817-1276

Managing Director: Peggy Lui
Editor and copywriter: Merci Team
Art Direction: Peggy Lui
Design by: Dasom Park
Printed in Japan/ Canada

One Story by Merci Media Corporation is a Trademark publication.
Trademark file number 2222129.
It all begins with one story - One Brand, One Solution, One Story